



THE CENTRE FOR
EPILEPSY & SEIZURE EDUCATION
IN BRITISH COLUMBIA

WELCOME MAY

PURPLE DAY RECAP – EPILEPSY IN FULL COLOUR



Thank you to everyone who joined us for *Epilepsy in Full Colour* at Kariton Art Gallery, on display from April 5–26 in honour of Purple Day and Epilepsy Awareness Month.

This powerful exhibit featured artwork by individuals affected by epilepsy, offering honest and creative reflections on life beyond the diagnosis.

We're grateful to the amazing artists, Kariton Art Gallery, and Abbotsford Council for making this exhibit possible.

[Click Here To View The Virtual Gallery](#)



SECOND ANNUAL PLANT PURPLE



#PlantPurple

ESEBC's Second Annual



Grow Epilepsy Awareness by #PlantingPurple

From May 1 - 31

It's Back - Our 2nd Annual #PlantPurple Campaign!

Did you know that every flower holds a special meaning? This spring, we're once again inviting BC gardeners to plant purple flowers in support of the 50,000+ British Columbians living with epilepsy.

Through #PlantPurple, we'll continue to highlight the unique symbolism of purple blooms - strength, dignity, resilience - and connect them to the incredible spirit of the epilepsy community.

How to take part:

Plant purple flowers in your garden, pots, or planters

Snap a photo of your creation

Share it on social media using #PlantPurple and tag @centreforepilepsy

Let's turn BC purple with purpose - one flower at a time.

**PURPLE DAY PARTNER:
MARMALADE BAKERY VISIT**



Our Executive Director, Christine Petkau, recently had the pleasure of visiting Caelin and Kyra King, owners of Marmalade Bakery in Penticton, BC. As one of our incredible Purple Day partners, Marmalade Bakery helped raise awareness

and show support for the epilepsy community in a truly delicious way. If you are in the Penticton area, be sure to stop by and grab some treats!

Thank you, Caelin and Kyra, for using your creativity and kindness to make a difference!



AGM 2025: SAVE THE DATE



2025 ANNUAL GENERAL MEETING

May 27, 2025 @ 5:30 p.m.

Unit 112 - 32868 Ventura
Avenue, Abbotsford BC
or via ZOOM



KIDS SUMMER CAMP REGISTRATION





SUMMER CAMP



FOR CHILDREN

**APPLICATIONS NOW OPEN
FOR SUMMER 2025**

APPLY NOW

ESEBC Camp Subsidy Available
Apply for support after acceptance to camp




British Columbia/Yukon

SUMMER CAMP REGISTRATION OPEN

For Summer 2025

APPLY NOW

ESEBC CAMP SUBSIDY AVAILABLE
APPLY FOR SUBSIDY AFTER ACCEPTANCE INTO CAMP



[Click Here to Apply for Camp Sponsorship](#)

**ESEBC is proud to provide camp subsidy to select campers, please apply and be accepted to Zajac Ranch or Easter Seals before applying for camp subsidy.*

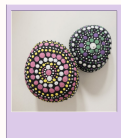
MAY PROGRAMS

mandala art expression series

Register today and receive a free paint kit!

Date: Thursday, May 15 @ 1:30 pm
Registration Deadline for Free Paint Kit: April 10, 2025
Place: Facebook Live (virtual)
<https://www.facebook.com/centreforepilepsy/>

Register through www.esebc.ca or
 email info@esebc.ca for more
 information.



 EPILEPSY & SEIZURE EDUCATION

Join Us

Epilepsy Connect Support Group

Date: Thursday, May 22, 2025
Time: 5:00 - 6:00 p.m.
Location: Zoom - virtual link will be sent upon registration

Register through www.esebc.ca or email
info@esebc.ca for more information.



 EPILEPSY & SEIZURE EDUCATION

 EPILEPSY & SEIZURE EDUCATION

Join our Epilepsy Online Community Hubs!

Connecting People Affected by Epilepsy in the Interior Region
 via Facebook Group



Join NOW on Facebook! Go to esebc.ca and the link will be on the main page.

For more information:
info@esebc.ca
www.esebc.ca

Funded by:


[Mandala Art Registration](#)

[Epilepsy Connect Registration](#)

[Join Interior Community Hub](#)



Copyright © 2025 The Centre for Epilepsy & Seizure Education in British Columbia, All rights reserved.

Mailing Address: 112 - 32868 Ventura Avenue, Abbotsford, BC Canada V2S 6J3

Want to change how you receive these emails? You can [unsubscribe](#) or [manage preference](#).